

# R248M, R248F



Energy  
Management

## Ball cocks for water for heating/cooling systems

Datasheet  
0879EN 05/2024



Ball cock with threaded male-male connections (R248M) or female-male connections (R248F).  
Standard port.

### ➤ Versions and product codes

SERIES	PRODUCT CODE	CONNECTIONS	FINISHING	HANDLE TYPE	HANDLE COLOR
R248M	R248X023	R 1/2" x G 3/4"M flat seat	Chrome plated brass	One lug T-handle	Red
	R248Y023	R 1/2" x G 3/4"M flat seat	Brass	One lug T-handle	Red
R248F	R248X024	G 1/2"F x G 3/4"M flat seat	Chrome plated brass	One lug T-handle	Red
	R248Y024	G 1/2"F x G 3/4"M flat seat	Brass	One lug T-handle	Red

### ➤ Technical data

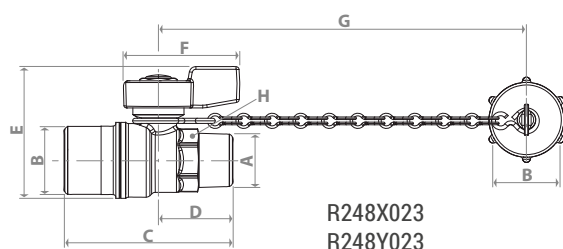
#### Main features and materials

- Cocks for water for heating/cooling systems
- Standard port
- Body, sleeve, chain and cap made of UNI EN 12165 CW617N chrome plated or not chrome plated brass
- Stem with double O-Ring
- Nut with anti-corrosion coating, with guarantee seal and hologram
- Aluminium one lug T-handle, red painted

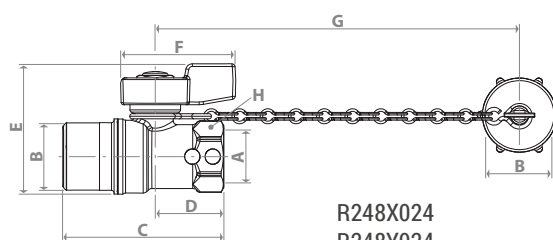
#### Fields of applications

- Min. working temperature: -20 °C with 50 % glycol solutions
- Max. working temperature: 90 °C
- Max. working pressure at 20 °C with water: 1,6 MPa (16 bar)

## ➤ Dimensions and Kv



R248X023  
R248Y023



R248X024  
R248Y024

SERIES	PRODUCT CODE	DN	A	B	C [mm]	D [mm]	E [mm]	F [mm]	H [mm]	G [mm]	Kv
R248M	R248X023	14	R 1/2"	G 3/4"M f.s.	65	29	51	44	wr.22	140	10,2
	R248Y023	14	R 1/2"	G 3/4"M f.s.	65	29	51	44	wr.22	140	10,2
R248F	R248X024	14	G 1/2"F	G 3/4"M f.s.	63	27	51	44	wr.25	140	10,2
	R248Y024	14	G 1/2"F	G 3/4"M f.s.	63	27	51	44	wr.25	140	10,2

## ➤ Product specifications

### R248X023

Ball cock with M (R - EN 10226) x M flat seat connections (ISO 228). For heating/cooling systems. Standard port. Body, sleeve, chain and cap in brass UNI EN 12165 CW617N chrome plated. Aluminium one lug T-handle red painted. Stem with double O-Ring. Nut with anti-corrosion coating, with guarantee seal and hologram. Temperature range: 5÷90 °C. Min. working temperature: -20 °C with 50 % glycol solutions. Max. working pressure at 20 °C with water: 16 bar.

### R248Y023

Ball cock with M (R - EN 10226) x M flat seat connections (ISO 228). For heating/cooling systems. Standard port. Body, sleeve, chain and cap in brass UNI EN 12165 CW617N. Aluminium one lug T-handle red painted. Stem with double O-Ring. Nut with anti-corrosion coating, with guarantee seal and hologram. Temperature range: 5÷90 °C. Min. working temperature: -20 °C with 50 % glycol solutions. Max. working pressure at 20 °C with water: 16 bar.

### R248X024

Ball cock with F (ISO 228) x M flat seat connections (ISO 228). For heating/cooling systems. Standard port. Body, sleeve, chain and cap in brass UNI EN 12165 CW617N chrome plated. Aluminium one lug T-handle red painted. Stem with double O-Ring. Nut with anti-corrosion coating, with guarantee seal and hologram. Temperature range: 5÷90 °C. Min. working temperature: -20 °C with 50 % glycol solutions. Max. working pressure at 20 °C with water: 16 bar.

### R248Y024

Ball cock with F (ISO 228) x M flat seat connections (ISO 228). For heating/cooling systems. Standard port. Body, sleeve, chain and cap in brass UNI EN 12165 CW617N. Aluminium one lug T-handle red painted. Stem with double O-Ring. Nut with anti-corrosion coating, with guarantee seal and hologram. Temperature range: 5÷90 °C. Min. working temperature: -20 °C with 50 % glycol solutions. Max. working pressure at 20 °C with water: 16 bar.

**⚠ Safety Warning.** Installation, commissioning and periodical maintenance of the product must be carried out by qualified operators in compliance with national regulations and/or local standards. A qualified installer must take all required measures, including use of Individual Protection Devices, for his and others' safety. An improper installation may damage people, animals or objects towards which Giacomini S.p.A. may not be held liable.

**♻ Package Disposal.** Carton boxes: paper recycling. Plastic bags and bubble wrap: plastic recycling.

**ℹ Additional information.** For more information, go to [giacomini.com](http://giacomini.com) or contact our technical assistance service. This document provides only general indications. Giacomini S.p.A. may change at any time, without notice and for technical or commercial reasons, the items included herewith. The information included in this technical sheet do not exempt the user from strictly complying with the rules and good practice standards in force.

**♻ Product Disposal.** Do not dispose of product as municipal waste at the end of its life cycle. Dispose of product at a special recycling platform managed by local authorities or at retailers providing this type of service.