



SERIES VRG330



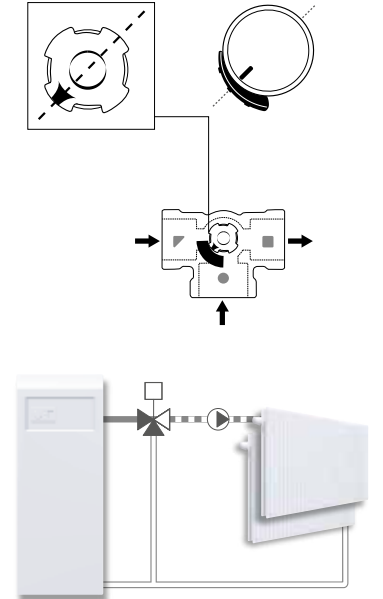
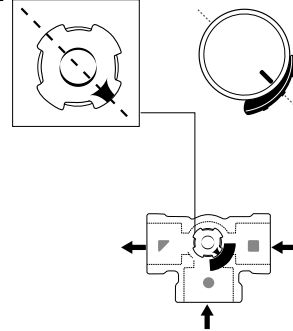
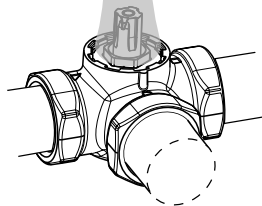
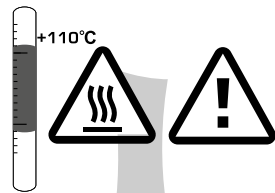
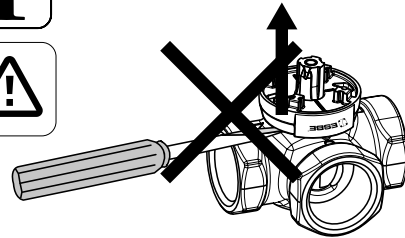
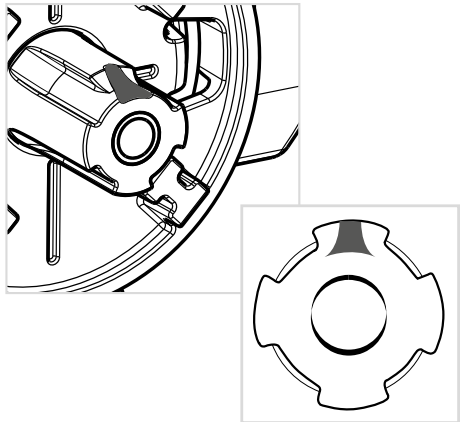
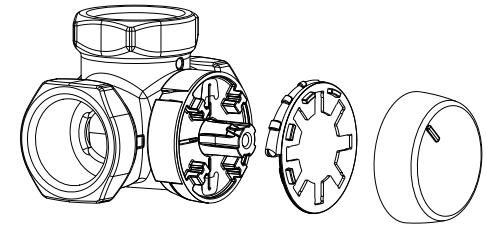
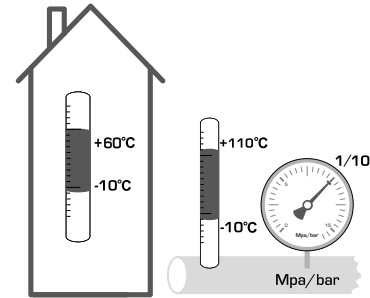
Mtrl.nr: 9814 03 04 • Ritn.nr: 7049 utg. D • Rev. 2022-01-05



Series VRG331
Series VRG332
Series VRG333
Series VRG338



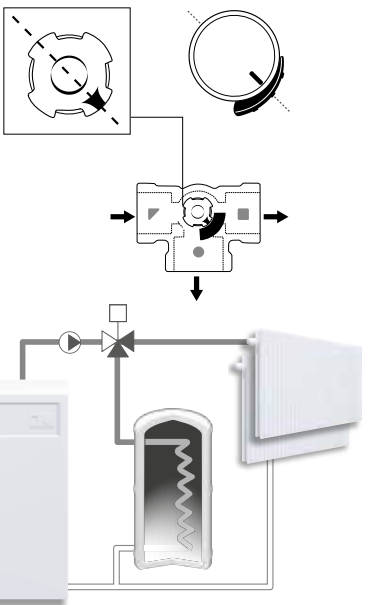
PED 2014/68/EU, article 4.3



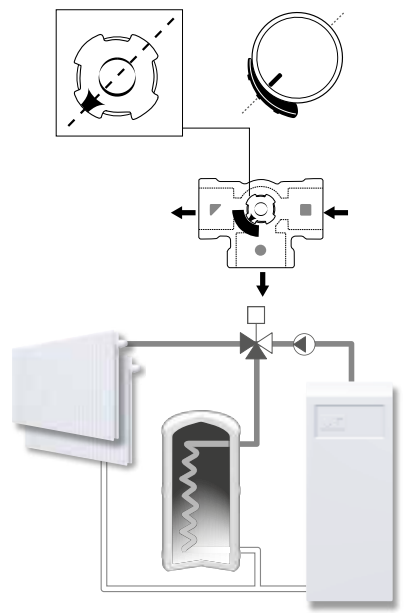
Piping Schematics are General Representations

2

a



b



i



<http://www.esbe.eu/global/en/products/rotary-valves>